

APPLICATION:

Pour utilisation en zones 1, 2, 21 et 22 (gaz et poussière).

ette version Lumistar impressionne par son design compact et son éclairage puissant.

- Pour l'éclairage de l'intérieur des cuves, réservoirs, agitateurs et autres conteneurs fermés, ainsi que dans les indicateurs de flux visuel dans les environnements ATEX.

Compatible en montage sur hublots DIN 28120/28121 ou équivalent et autres hublots type MV type DIN 11851.

technologie LED garantie une consommation électrique faible, durée de vie prolongée, température couleur blanc froid.

CLASSE DE PROTECTION :

IP 65 et IP 67 conforme DIN EN 60529

TEMPERATURE DE SERVICE :

de -20°C à +50°C

PROTECTION NORME ATEX:

Conforme à la directive 2014/34/EU

ce projecteur est particulièrement adapté aux exigences :

Gaz	
EN IEC 60079-0:2018	Exigences générales
EN 60079-1:2014	Boîtiers antidéflagrants
Groupe d'explosion	IIC (inclut IIA et IIB)
Classe de température	T6 à 40°C / T4 à 50°C

Poussière	
EN IEC 60079-0:2018	Exigences générales
EN 60079-31:2014	Protection par enveloppes
Groupe d'explosion	IIC (inclut IIA et IIB)
Classe de température	T85°C à 40°C / T130°C à 50°C

EU-Type Examination Certificate:

BVS 20 ATEX E 016

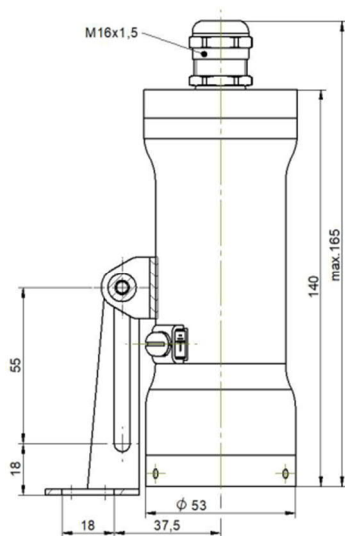


II 2G Ex db IIC T6 / T4 Gb

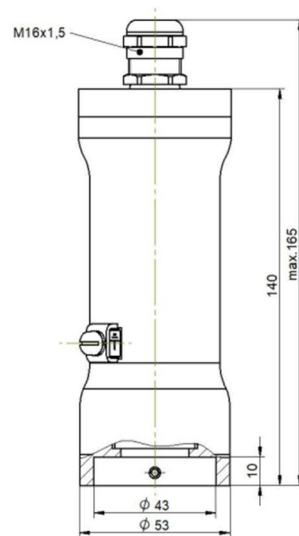
II 2D Ex tb IIIC T85°C / 130°C Db

Température ambiante en utilisation: -20°C ≤ T_a ≤ +40°C / +50°C

tension	puissance	intensité lumineuse	temp.couleur	angle diffusion	accessoire	N° de pièce
24 V AC/DC	7 W	400 – 500 lm	5700 K blanc froid	19°	charnière fixation	3542.151.00
24 V AC/DC	7 W	400 – 500 lm	5700 K blanc froid	19°	montage aseptique	3542.153.00



ESL 53LED Ex avec charnière



ESL 53LED Ex aseptique pour manchon

Assemblage:

en utilisation sur un hublot circulaire DIN28120 ou MV DIN11851, montage avec charnière. Version aseptique pour montage sur METACLAMP ou avec manchon sur MV

Matériels

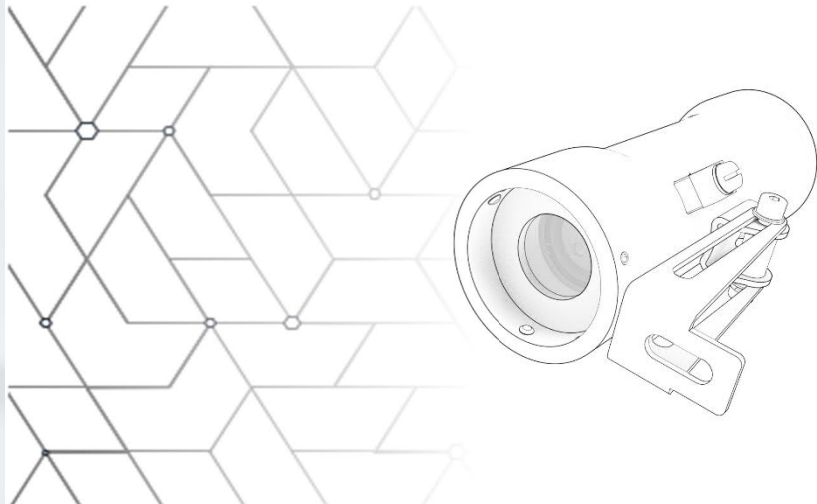
Corps du luminaire	inox
verre	Borosilicate
charnière fixation	inox

CONNEXION ELECTRIQUE:

Câble 3 fils long.3m dans presse étoupe sur le dessus du projecteur.

POIDS:

1,7 kg câble et charnière inclus



APPLICATION:

For safe use in hazardous areas of zones 1, 2, 21 and 22 (gas and dust).

This Lumistar version impresses with its small design and powerful light output.

- For illuminating the interior of vessels, tanks, agitators, silos and other generally closed containers and reactors and also in visual flow indicators in explosive environments.

Compatible with round sightglass fittings according to DIN 28120/28121 or similar as well as for screw-type sightglass fittings analogue DIN 11851 and flow sightglass fittings.

LED technology guarantees even lower energy consumption, longer operating life and flexible light colour.

PROTECTION CLASS:

IP 65 and IP 67 according to DIN EN 60529

AMBIENT TEMPRETURE:

From -20°C up to +50°C

TECHNICAL DATA EX PROTECTION:

Approval according to directive 2014/34/EU

This luminaire meets the essential safety and health requirements by complying with the regulations for

Gas	
EN IEC 60079-0:2018	General Requirements
EN 60079-1:2014	Flame-proof Enclosures „d“
Explosion group	IIC (includes IIA und IIB)
Temperature - class	T6 at 40°C / T4 at 50°C

Dust	
EN IEC 60079-0:2018	General Requirements
EN 60079-31:2014	Protection by Enclosures „t“
Explosion group	IIIC (includes IIIA und IIIB)
Temperature - class	T85°C at 40°C / T130°C at 50°C

EU-Type Examination Certificate:
BVS 20 ATEX E 016



II 2G Ex db IIC T6 / T4 Gb

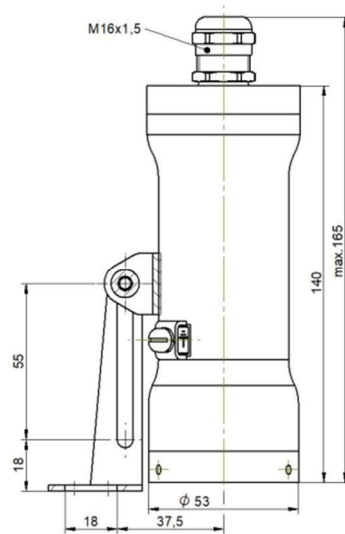
II 2D Ex tb IIIC T85°C / 130°C Db

Ambient temperature range:

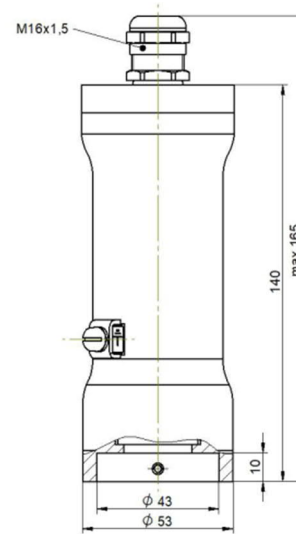
-20°C ≤ T_a ≤ +40°C / +50°C

Voltage	Nominal power	Luminous flux	Light colour *	Beam angle	Zusatz	Part no.
24 V AC/DC	7 W	400 – 500 lm	5700 K cold white	19°	hinged bracket	3542.151.00
24 V AC/DC	7 W	400 – 500 lm	5700 K cold white	19°	flanged adapter	3542.153.00

* Other light colours on request



ESL 53LED Ex with hinged bracket



ESL 53LED Ex for flanged adapter

FASTENING:

In the assembly of a circular sight glass fitting and visual flow indicators, the luminaire is fixed to the coverflange with the hinged bracket. With a screw-type sightglass fitting the luminaire is fixed to the cover nut, or optionally via a flanged adapter or a hinged bracket.

ELECTRICAL CONNECTION:

Cable gland at the top of the luminaire cover cable length: min. 3m

NOMINAL SIZES:

For circular sight glasses according to DIN 28120, DIN 28121 and visual flow indicators, mounting on the cover flange: from DN 50.

For screw-type sight glass fittings similar to DIN 11851, fixing on or under the cover nut:
DN 50, 65, 80: via flanged adapter
DN 80, 100, 125: via hinged bracket
DN 80 via flanged adapter or hinged bracket

WEIGHT:

1,7 kg including hinged bracket and cable

Materials	
Luminaire body	Stainless steel
Glass	Borosilicate
Fastening parts	Stainless steel

Accessories	Part no.
Luminaire mounting without field of view	
Flanged adapter DN 50, (slotted nut opening: 62 mm)	1356.045.00
Flanged adapter DN 60, (slotted nut opening: 65 mm)	1356.036.00
Flanged adapter DN 80, (slotted nut opening: 80 mm)	1356.077.00
Luminaire mounting with field of view for MV	
for nom. diameter DN 80 (slotted nut opening: 94 mm)	0354.035.00
for nom. diameter DN 100 (slotted nut opening: 115 mm)	0354.036.00
for nom. diameter DN 125 (slotted nut opening: 138 mm)	0354.037.00

ORDER DATA (E.G.):

Part-no 3542.151.00 Lumistar luminaire ESL 53LED Ex